

How to use the Tablet PC



1. Pwr On/Off

2. Pwr
SSD
Bat
Wireless

3. Menu

4. F1
F2
F3

5. Up
Down
Left
Right
OK

	Components	Function description
1	Power On and Off	Press 4 seconds to turn on the tablet pc.
2	LED indicator	Shows the power status. SSD status. Left and Right battery status. Wireless status.
3	Menu	Press Menu function to show brightness, volume, battery status, wireless enable/disable and system status
4	F1 – F3 hotkey	6 Programmable hot key functions for user to define by application, Use short or Long press on the keys for different functions. F1 short will start help menu.
5	Up/Down/Left/Right/OK button	Control the up, down, left, right and Enter function

LED indicators

LED Term	Indicator status description
Power mode	Green: System ON No light: System OFF
Battery status	No light: 100% fully charged or power on with AC adapter Green light: Running on battery >5% Orange light: Charging Red light: Low battery
SSD status	Green light blinking: SSD in use
WIFI status	Green light blinking: WIFI in use. Green light turned off: WIFI off

ALGIZ 7

Quick Start Guide

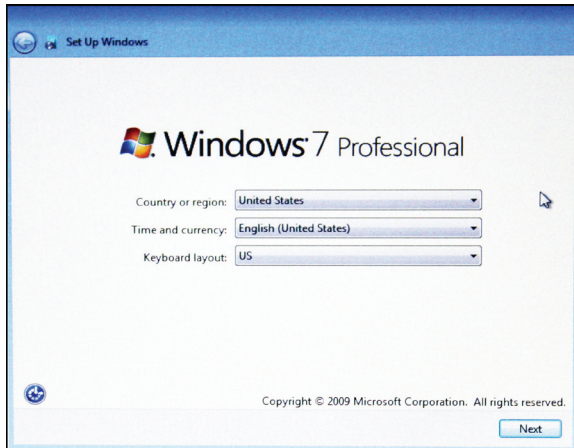



handheld
www.handheldgroup.com

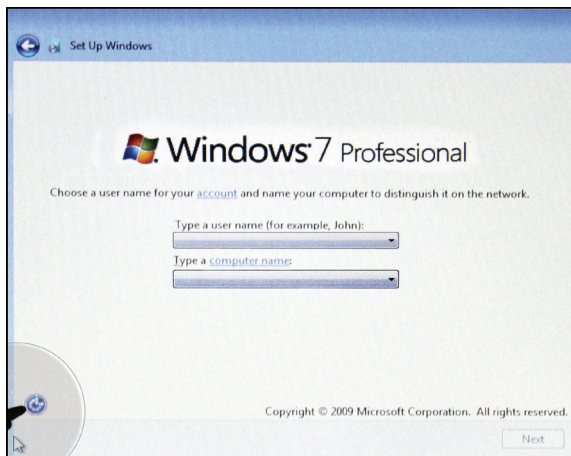
handheld

Please follow these steps, before starting to use your Algiz 7 for the first time:

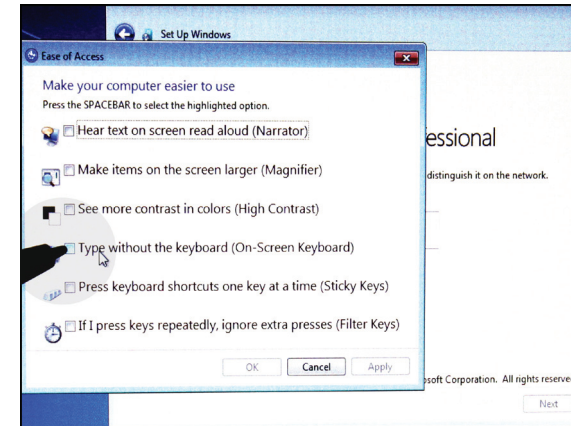
1. **IMPORTANT:** Write down the Microsoft Windows license Product Key: XXXXX-XXXXX-XXXXX-XXXXX-XXXXX. Located under the battery. You will need it when starting the unit for the first time.
2. Install and lock the batteries, Attach the charger and start charging
3. When starting the unit for the first time, press the power key and HOLD for 4-5 seconds (until the left LED turns green)
4. Chose your country or region. Please be careful, as this will set the language of the operating system. This cannot be changed, unless a total re-installation is being made.



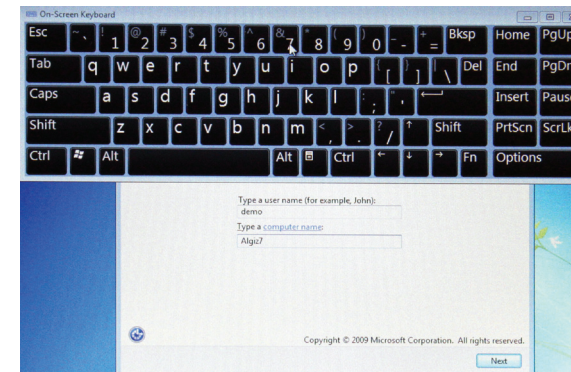
5. Time, currency and keyboard layout is a setting that can be changed later on, in the control panel.
6. To type a username, click on the icon  in the left bottom corner



7. Check "Type without the keyboard" and press OK



8. Chose and type a username + unit name, using the on-screen keyboard



9. Chose and type your password
10. Enter your windows license Product Key, as noted in step 2.
11. Read and accept the license terms
12. Chose your settings for updates, date and time.
13. Continue the charging. First charge approximately 4 hours.

The full product manual can be downloaded from www.handheldgroup.com (or www.ruggedalgiz.com)