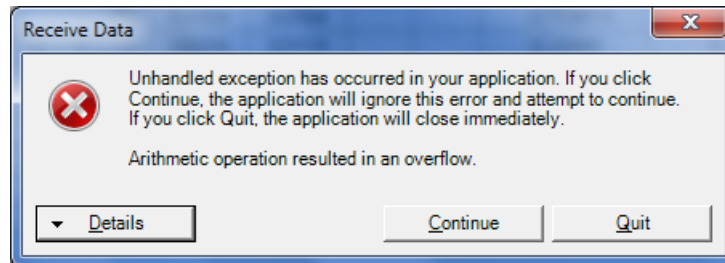


## SuperACE Data Transfer Error in Windows 7

If you are running SuperACE on a Windows 7 OS you may be getting the following error when you try to transfer data to and from a windows mobile device.

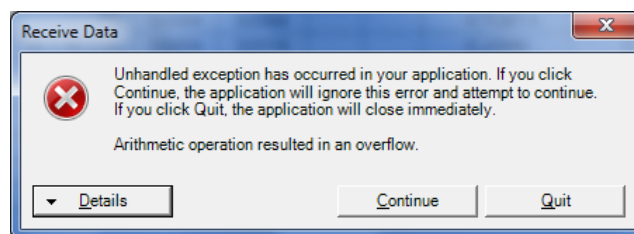
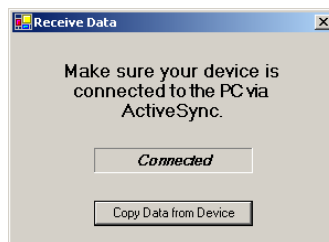


This is a new development which seems to have started after recent Microsoft updates for Windows 7.

If you are experiencing this error please use the following steps to transfer data to or from your windows mobile device.

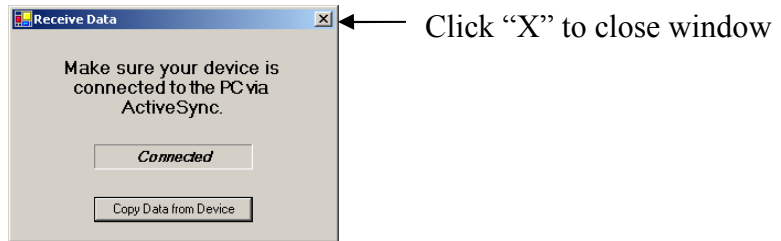
### **Transfer cruise data from mobile device to SuperACE.**

In following the normal procedure to transfer cruise data from Pocket SuperEASY to SuperACE you may get the error message in SuperACE after you click on "Copy Data from Device".

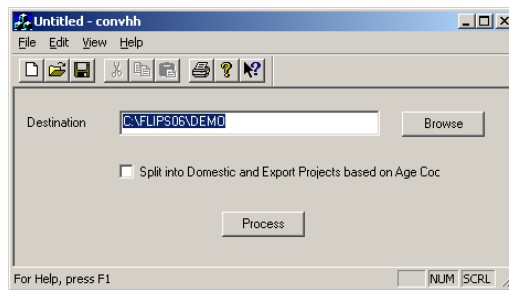


Error message

If this occurs, click “Continue” on the error message screen. The screen will go away and the Receive Data window should still be present. Click the “X” button in the upper right hand corner of the Receive Data window to close it.

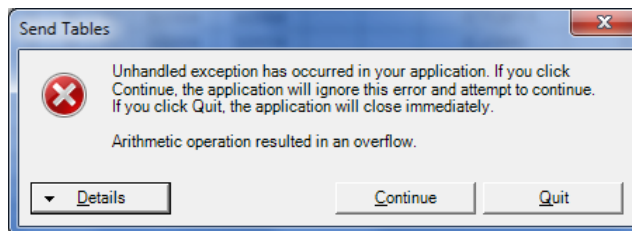
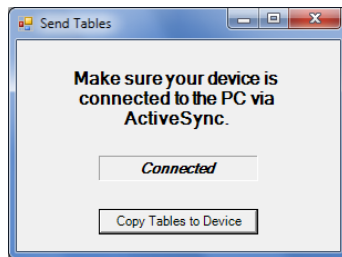


The following window should appear allowing you to proceed with the normal data transfer. If you don't see this window on your computer check the task bar to see if it is minimized on the bar. If it is on the task bar open the window so you can proceed with the data transfer as normal.



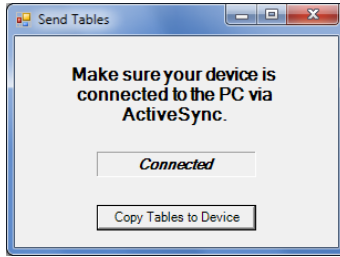
### Transfer Tables from SuperACE to windows mobile device

In following the normal procedure to transfer tables from SuperACE to Pocket SuperEASY you may get the error message in SuperACE after you click on “Copy Tables to Device”.

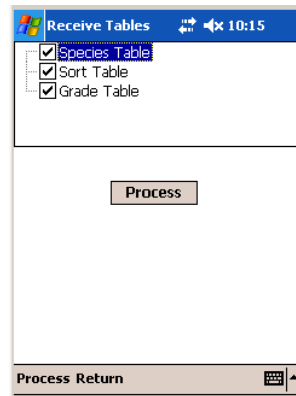
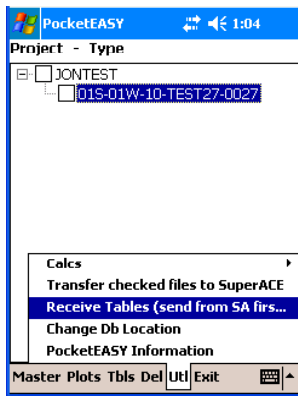


Error message

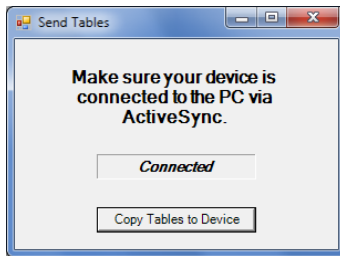
If this occurs, click “Continue” on the error message screen. The screen will go away and the Send Tables window should still be present. Leave this window open for now.



In Pocket SuperEASY on the handheld device follow the normal procedure for receiving the tables from SuperACE.



After you have completed the table transfer steps in Pocket SuperEASY return to SuperACE and click on the “X” in the upper right hand corner of the Send Tables window to close the window.



Click “X” to close window

The tables should now be on the handheld.